

## STAT5B Protein

Full length recombinant protein expressed in Sf9 cells

**Catalog # S56-54BG**

Lot # Y874-3

### Product Description

Recombinant full-length human STAT5B was expressed by baculovirus in Sf9 insect cells using an N-terminal GST tag. This gene accession number is [BC065227](#).

### Gene Aliases

STAT5

### Formulation

Recombinant protein stored in 50mM Tris-HCl, pH 7.5, 50mM NaCl, 10mM glutathione, 0.1mM EDTA, 0.25mM DTT, 0.1mM PMSF, 25% glycerol.

### Storage and Stability

Store product at -70°C. For optimal storage, aliquot target into smaller quantities after centrifugation and store at recommended temperature. For most favorable performance, avoid repeated handling and multiple freeze/thaw cycles.

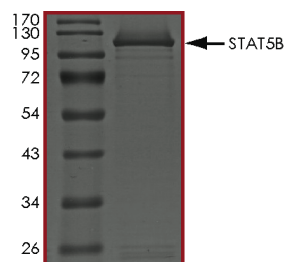
### Scientific Background

STAT5B or signal transducer and activator of transcription 5B is a member of the STAT family of transcription factors. STATs are phosphorylated by the receptor associated kinases and then form homo- or heterodimers that translocate to the cell nucleus where they act as transcription activators. STAT5B is activated in response to a variety of cytokines (1). The JAK/STAT pathway mediates a key signal from the somatic gonad that regulates male germline sexual development (2). STAT5B is critical for maintenance of tolerance in vivo and it is proposed that STAT5B is probably activated by IL2R.

### References

1. Wang, D.et.al: Naturally occurring dominant negative variants of Stat5.Molec. Cell Biol. 16: 6141-6148, 1996.
2. Wawersik, M.et.al: Somatic control of germline sexual development is mediated by the JAK/STAT pathway. (Letter) Nature 436: 563-567, 2005.

### Purity



The purity of STAT5B protein was determined to be **>95%** by densitometry. Approx. MW **115kDa**.

## STAT5B Protein

Full length recombinant protein expressed in Sf9 cells

Catalog #	S56-54BG
Lot #	Y874-3
Purity	>95%
Concentration	0.2 µg/µl
Stability	1yr at -70°C from date of shipment
Storage & Shipping	Store product at -70°C. For optimal storage, aliquot target into smaller quantities after centrifugation and store at recommended temperature. For most favorable performance, avoid repeated handling and multiple freeze/thaw cycles. Product shipped on dry ice.