

Anti-MAP2

Rabbit Polyclonal Antibody

Catalog # M110-563R

Lot # Z2014-14

Cited Applications

ELISA, IHC

Ideal working dilutions for each application should be empirically determined by the investigator.

Specificity

Recognizes the MAP2 protein

Cross Reactivity

Human, Mouse and Rat

Host/Isotype/Clone#

Rabbit, IgG

Immunogen

MAP2 antibody was raised against a recombinant human MAP2 protein 339-554aa

Formulation

PBS, pH 7.4 with 0.02% Sodium Azide

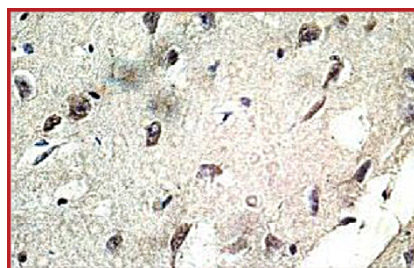
Stability

1yr at -20°C from date of shipment

References

1. Song,Z., He,C.D., Sun,C. et al. Increased expression of MAP2 inhibits melanoma cell proliferation, invasion and tumor growth in vitro and in vivo. Exp. Dermatol. 19 (11), 958-964 (2010).

Sample Data



Immunohistochemical staining of formalin-fixed paraffin-embedded fetal brain showing cytoplasmic staining with Anti-MAP2 antibody at a dilution of 1:100

Anti-MAP2

Rabbit Polyclonal Antibody

Catalog #	M110-563R
Lot #	Z2014-14
Purification	Affinity chromatography
Stability	1yr at -20°C from date of shipment
Storage & Shipping	Store product at -20°C. For optimal storage, aliquot antibody into smaller quantities after centrifugation and store at recommended temperature. For optimal performance, avoid repeated handling and multiple freeze/thaw cycles. Product shipped on ice packs.

To place your order, please contact us by phone 1-(604)-232-4600, fax 1-604-232-4601 or by email: orders@signalchem.com
www.signalchem.com

FOR IN VITRO RESEARCH PURPOSES ONLY. NOT INTENDED FOR USE IN HUMAN OR ANIMALS.