

Anti-PGCC1

Rabbit Polyclonal Antibody

Catalog # P845-363R

Lot # Z2014-22

Cited Applications

ELISA, WB

Ideal working dilutions for each application should be empirically determined by the investigator.

Specificity

Recognizes the PGCC1 protein

Cross Reactivity

Human, Mouse and Rat

Host/Isotype/Clone#

Rabbit, IgG

Immunogen

PGCC1 antibody was raised against an 18 amino acid synthetic peptide from near the carboxy terminus of human PGCC1.

Formulation

PBS containing 0.02% sodium azide.

Stability

1yr at -20°C from date of shipment

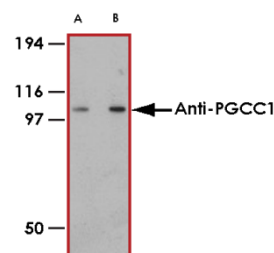
Scientific Background

The transcription factor peroxisome proliferator-activated receptor gamma (PPARγ) plays essential roles in adipogenesis by regulating adipocyte-specific genes through association of various co-factors. One such co-factor, PGCC1 (also known as FAM120B), is widely expressed in adult tissues and throughout embryonic development. Overexpression of this protein in OP9 pre-adipocytes promoted their differentiation into adipocytes, and knockdown of PGCC1 expression through RNA interference blocked this process. PGCC1 is homologous to C9orf10 (also known as FAM120A) and has been mapped to chromosome Xp11.22. At least two isoforms of PGCC1 are known to exist.

References

- Berger J and Moller DE. The mechanisms of actions of PPARs. Annu. Rev. Med.2002; 53:409-35.
- Li D, Kang Q, and Wang D-M. Constitutive coactivator of peroxisome proliferator-activated receptor (PPARγ), a novel coactivator of PPARγ that promotes adipogenesis. Mol. Endocrin.2007; 21:2320-33.
- Holden S and Raymond FL. The human gene CXorf17 encodes a member of a novel family of putative transmembrane proteins: cDNA cloning and characterization of CXorf17 and its mouse ortholog orf34. Gene2003; 318:149-61.

Sample Data



Western blot analysis of PGCC1 in rat thymus tissue lysate with Anti-PGCC1 antibody at (A) 0.5 µg/mL and (B) 1 µg/mL.

Anti-PGCC1

Rabbit Polyclonal Antibody

Catalog # **P845-363R**

Lot # **Z2014-22**

Purification

Stability

Storage & Shipping

Affinity chromatography
1yr at -20°C from date of shipment

Store product at -20°C. For optimal storage, aliquot antibody into smaller quantities after centrifugation and store at recommended temperature. For optimal performance, avoid repeated handling and multiple freeze/thaw cycles. Product shipped on ice packs.

To place your order, please contact us by phone 1-(604)-232-4600, fax 1-604-232-4601 or by email: orders@signalchem.com
www.signalchem.com

FOR IN VITRO RESEARCH PURPOSES ONLY. NOT INTENDED FOR USE IN HUMAN OR ANIMALS.