

Anti-phospho-Histone H2A.X (Ser139)

Rabbit Polyclonal Antibody

Catalog # H11-565R

Lot # Z2014-23

Cited Applications

WB

Ideal working dilutions for each application should be empirically determined by the investigator.

Specificity

Recognizes the Histone H2A.X protein phosphorylated at serine 139

Cross Reactivity

Human, Mouse and Rat

Host/Isotype/Clone#

Rabbit, IgG

Immunogen

The antiserum was produced against synthesized phosphopeptide derived from human Histone H2A.X around the phosphorylation site of serine 139 (Q-A-SP-Q-E).

Formulation

Phosphate buffered saline (without Mg²⁺ and Ca²⁺), pH 7.4, 150mM NaCl, 0.02% sodium azide and 50% glycerol.

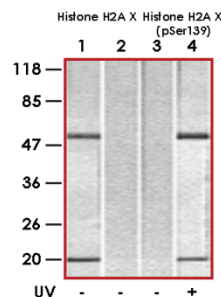
Stability

1yr at -20°C from date of shipment

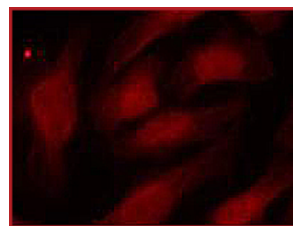
References

1. Yaneva M, et al. (2005) Nucleic Acids Res. 33(16): 5320-5330.
2. Tsukuda T, et al.(2006) Nature. Author manuscript; available in PMC 2006 March 6.

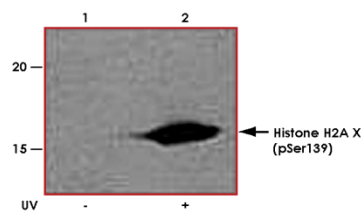
Sample Data



Western blot analysis of extract from 293 cells untreated or treated with UV, using Histone H2A.X antibody (Lane 1+2) and Anti-phospho-Histone H2A.X (Ser139) (Lane 3+4)



Immunofluorescence staining of methanol-fixing HeLa cells using Anti-phospho-Histone H2A.X (Ser139)



Western blot analysis of extracts from HT29 cells untreated (Lane 1) or treated with UV (Lane 2) using Anti-phospho-Histone H2A.X (Ser139)

Anti-phospho-Histone H2A.X (Ser139)

Rabbit Polyclonal Antibody

Catalog # **H11-565R**

Lot # **Z2014-23**

Purification **Affinity chromatography**

Stability **1yr at -20°C from date of shipment**

Storage & Shipping **Store product at -20°C. For optimal storage, aliquot antibody into smaller quantities after centrifugation and store at recommended temperature. For optimal performance, avoid repeated handling and multiple freeze/thaw cycles. Product shipped on ice packs.**