

Anti-Caspase-3

Rabbit Polyclonal Antibody

Catalog # C603-363CR

Lot # Z2014-3

Cited Applications

ELISA, IHC

Ideal working dilutions for each application should be empirically determined by the investigator.

Specificity

Recognizes the Caspase-3 protein

Cross Reactivity

Human

Host/Isotype/Clone#

Rabbit, IgG

Immunogen

Caspase-3 antibody was raised against a 17 amino acid synthetic peptide near the center of human Caspase-3.

Formulation

PBS + 0.02% sodium azide

Stability

1yr at -20°C from date of shipment

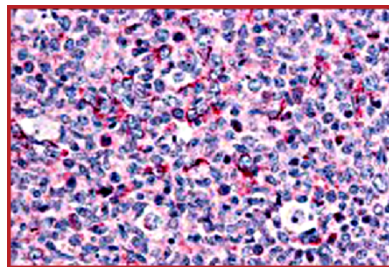
Scientific Background

Caspases are a family of cysteine proteases that can be divided into the apoptotic and inflammatory caspase subfamilies. Unlike the apoptotic caspases, members of the inflammatory subfamily are generally not involved in cell death but are associated with the immune response to microbial pathogens. The apoptotic subfamily can be further divided into initiator caspases, which are activated in response to death signals, and executioner caspases, which are activated by the initiator caspases and are responsible for cleavage of cellular substrates that ultimately lead to cell death. Caspase-3 is synthesized as an inactive proenzyme that undergoes proteolytic cleavage by caspases 8, 9 and 10 to produce 2 subunits, termed p20 and p11. These subunits dimerize to form the active enzyme. Caspase-3 proteolytically cleaves and activates other proteins such as caspases 6, 7 and 9.

References

1. Martinon F and Tschopp J. Inflammatory caspases: linking an intracellular innate immune system to autoinflammatory diseases. *Cell* 2004; 117:561-74.
2. Zhivotovsky B and Orrenius S. Caspase-2 function in response to DNA damage. *Biochim. Biophys. Res. Comm.* 2005; 331:859-67.
3. Wolf BB and Green DR. Suicidal tendencies: apoptotic cell death by caspase family proteinases. *J. Biol. Chem.* 1999; 274:20049-52.
4. Slee EA, Adrain C, and Martin SJ. Serial killers: ordering caspase activation events in apoptosis. *Cell Death Diff.* 1999; 6:1067-74.

Sample Data



Immunohistochemistry of Caspase-3 in human tonsil tissue with Anti-Caspase-3 at 5 µg/mL.

Anti-Caspase-3

Rabbit Polyclonal Antibody

Catalog #

C603-363CR

Lot #

Z2014-3

Purification

Affinity chromatography

Stability

1yr at -20°C from date of shipment

Storage & Shipping

Store product at -20°C. For optimal storage, aliquot antibody into smaller quantities after centrifugation and store at recommended temperature. For optimal performance, avoid repeated handling and multiple freeze/thaw cycles. Product shipped on ice packs.

To place your order, please contact us by phone 1-(604)-232-4600, fax 1-604-232-4601 or by email: orders@signalchem.com
www.signalchem.com

FOR IN VITRO RESEARCH PURPOSES ONLY. NOT INTENDED FOR USE IN HUMAN OR ANIMALS.